

Our School Newsletter

Greenwich Public School

Partnership and Opportunity
Excellence and Success

A Greenwich Road Campus: 72a Greenwich Road, Greenwich NSW 2065 T (02) 9436 3731 F (02) 9906 4120
A Kingslangley Road Campus: 32 Kingslangley Road, Greenwich NSW 2065 T (02) 9436 3217 F (02) 9906 6437
E: greenwich-p.school@det.nsw.edu.au W www.greenwich-p.schools.nsw.edu.au

Issue 38 Term 4 Week 8

25 November 2015

Principal's Message Megan Lockery

This term Stage 2 students have taken full advantage of our spring weather and outdoor learning areas during Maths activities. Here Year 4 is using water to measure and compare the capacity of containers and objects. They worked on establishing a level surface to accurately measure capacity using litres and millilitres. The next task was to select a suitable sized measuring jug or cylinder that would be appropriate for the container to be measured. Strategies to measure the volume of sealed objects were explored. It was discovered that the 'overflow' method was not as accurate as the 'displacement' method. ('Mr Archimedes Bath' by Pamela Allen comes to mind here!) As no commercial jug was large enough, constructing their own scaled measuring bucket was the only way to measure the displacement of a 1000 square centimetre wooden cube. How excited everyone was to find out that if this cube was empty, it would have a capacity of 1 litre!



Thank You Morning Tea

Our school is blessed to have such strong parental support and we would like to acknowledge this with a 'Thank You Morning Tea'. Your valuable contributions as reading and maths helpers, assistants on excursions, P&C members, School Council members, Scripture and Ethics teachers, band and strings committee members and general helpers in our school, help make Greenwich PS a great school.

The morning tea will be held on Thursday 3 December from 11am in the School Hall on Kingslangley Rd. We hope that you can join us.

Celebrating the Performing Arts

On Monday 30 November, everyone is invited to our K-6 Performing Arts Concert in the Hall from 6.30pm. We will showcase our performing arts talents. Please see the invitation in this newsletter for details. Further information for performers is attached to this newsletter.

Schools Spectacular Arrangements – Friday 27 November

This Friday, 235 students will attend the School Preview performance of the 2015 Schools Spectacular. Please wear school uniform, not sports uniform. We will have lunch from 10.20 – 10.50, so no lunch orders for students attending will be possible. Students need to bring a snack and drink in a disposable bag. There will be no opportunity to purchase any refreshments therefore no money is required. We will board the buses at 11am and not return until approximately 4.30pm. The buses will drop off at both Greenwich Rd and Kingslangley Rd. Students being dropped off at Greenwich Rd, including GOOSH students, will wear a coloured wrist band as a reminder. Teachers have compiled lists of drop off points according to the permission notes received. If your child is being dropped off at Greenwich Rd, you may wish to leave his/her school bag at home that day and only bring a disposable bag as school bags must remain at school - they are not permitted in the QANTAS Credit Union Arena. Don't forget to let GOOSH know that your child is on the excursion.

Students staying at school will have lunch at the usual time and will have lessons with the teachers remaining at school.

Upcoming Events

As this is a very busy time of year, I will highlight a few key events.

- 24 November – Transition to Year 2 2015 9.30-10.30am in Hall
- 26 November – School Council AGM 4pm
- 27 November – Schools Spectacular Excursion
- 30 November – Performing Arts Concert – 6.30pm in Hall
- 3 December – Thank You Morning Tea 11am in Hall
- 7 December – Year 6 Fun Day and Kindy Fun Day
- 8 December – Presentation Assembly K-6 at Hunters Hill HS 10am
- 9 December - Year 6 Graduation Dinner
- 10 December – Stage 3 Bowling Day
- 14 December – Stage 2 Movie Day and Stage 3 Disco 5.30pm
- 15 December – K-2 Movie Day
- 16 December – Year 6 Graduation Assembly at 2pm and all students' last day

Parent Information Session for Year 2 Transition

Around 40 parents/carers attended the transition to Year 2 forum yesterday to hear about the routines and organisation for 2016. Thanks to Ms Parrella, Mr Richmond and the Years 2-6 SRC for providing this information and the campus tour.

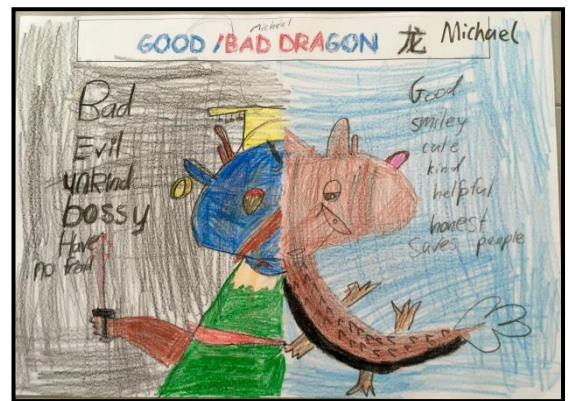
Megan Lockery

Principal

Good/Bad Dragon – Art work of 1LR

After watching the movie “Nezha Conquers the Dragon king” and reading the story book “Rain Dragon” in Mandarin lessons, students in 1LR compared two different types of dragons in Chinese culture and created an art work called “Good/Bad Dragon”. The art work combines two dragons into one body with different description words in each side to show the comparison. Students in 1LR really enjoyed creating their own dragons as well as expressing their ideas in front of the whole K/1 campus.

Rebeca Guo
Mandarin Teacher



SRC Giving Tree



The Years 2-6 SRC have organised a giving tree in aid of disadvantaged children.

They would be happy to receive gifts for any age from babies to teenagers. Please do not wrap your gifts. They can be left under the Christmas Tree in the Kingslangley Rd library.

Thank you.

Years 2-6 Representative Council

LIBRARY NEWS

Due to the implementation of a new library system the school libraries on both sites will be closed for the last 2 weeks of this term.

Please make sure that all overdue library books are returned by Friday December 4.

P&C NEWS**P&C wine drive**

The P&C is running a wine drive in time for Christmas. This is a great selection of quality wine that has been significantly discounted.

The wine is priced equivalent to Dan Murphy specials. People can verify this online.

The packs include 13 bottles and are priced between 35-55% off RRP.

Wine direct, on top off this great savings, will donate \$50 for every \$250 pack sold to Greenwich Public School.

Champagne, sparkling and adhoc bottles are also on offer with \$20 per case donated to Greenwich Public School.

Free delivery to your door.

Stock up for Christmas!

PERFORMING ARTS**Recorder Ensemble**

Dates for you to remember and for which your children must be practising!

Monday 30 November	Performing Arts Concert. All recorder players	6.30pm School Hall
Tuesday 1 December	Year 2	NO lesson
	Years 3-6	James Bond School Hall 8.45am
Wednesday 2 December	Year 3	Lesson ESL room 8.00am
	Years 3-6	James Bond School Hall 8.45am
Thursday 3 December	Year 2	Lesson ESL room 8.30am
Friday 4 December	Years 4-6	Lesson ESL room 8.00am
Monday 7 December	ALL recorders	Greenwich Community Carols, Leemon Reserve. Please be there at 6.30pm for a 7.00pm performance.
		<i>As this is a community run event students will be under the supervision of their parents/carers.</i>
Tuesday 8 December	Presentation Day	
	Year 2	NO lesson
	Years 3-6	James Bond School Hall 7.45 – 8.45am
Tuesday 15 December	All players 2-6	Recorder Party 1.10pm ESL room.

Bev De Luis

bev.deluis@hotmail.com

9436 4920

String Ensemble



**Does your child want to learn the VIOLIN
or CELLO at Greenwich Public School?
Accepting enrolments for 2016**

Please call Anita Crawford on 0430 763 493

Some artwork Around 2-6 Campus

Bottle Brush 4AP

Cardboard printing with acrylic paints



Early Sydney 4AP

Collage – magazine colour and texture effect, felt pen sketches.



Spring Blossoms Multi-Media 2MS



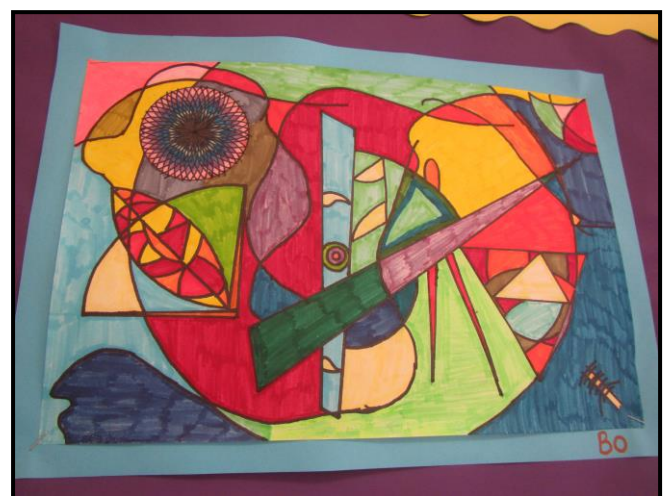
'My Family' (pencil and felt pen) 2MS



Maths Polyhedron 6RC



Artwork inspired by Kandinsky Texta 4/5/6AH



MERIT AWARDS Week 8

Years K/1



Bronze Awards



Bronze awards



Silver Awards



Years 2-6



Silver Awards**DIARY DATES****TERM 4****WEEK 8****Wednesday 25 November**

- 1OF, 1LR and KSM Robotics excursion

Thursday 26 November

- 4pm School Council Meeting and AGM
- 1AK, KKJ, 1LR Robotics excursion

Friday 27 November

- School Spectacular

WEEK 9**Monday 30 November**

- 6.30pm Performing Arts Concert

Thursday 3 December

- Public Schools High School Orientation Day
- Thank You Morning Tea 11am

WEEK 10**Monday 7 December**

- Greenwich Carols by Candlelight
- Year 6 Fun Day

Tuesday 8 December

- Presentation Assembly at Hunters Hill High School 10am

Wednesday 9 December

- Year 6 Graduation dinner

Thursday 10 December

- Stage 3 Strike Bowling, Chatswood

WEEK 11**Monday 14 December**

- Stage 3 Disco 5.30 – 7.30pm
- Stage 2 Picnic Day

Tuesday 15 December

- Stage 1 Picnic Movie Day
- Recorder Xmas Party ESL Room 1.10pm

Wednesday 16 December

- K/1 Christmas Concert
- Years 2-6 Talent Quest
- 2pm Year 6 Graduation Assembly
- Last day of Term 4 for students

Term Dates for 2016**Term 1 January 28 – April 8****Term 2 April 26 – 1 July****Term 3 July 18 – 23 September****Term 4 October 10 – 20 December****HARDCOPY NOTES HOME THIS WEEK**

- K-6 Presentation Day permission note
- K-6 Presentation Day Invitation

SURVEYS FOR YOUR ATTENTION

- Nil

EMAIL ATTACHMENTS HOME THIS WEEK

- K-6 Performing Arts Concert
- P&C Wine Drive Order Form



GREENWICH PUBLIC SCHOOL
Partnerships and Opportunity
Excellence and Success

25 November 2015

Greenwich Public School Presentation Day 2015

Dear Parents and Carers,

On **Tuesday 8 December**, Greenwich Public School will hold its **K-6 Presentation Day** at the **Hunters Hill High School Hall from 10.00am**. All parents/carers and community members are welcome to attend.

On this day, Greenwich Public School recognises outstanding effort and accomplishment across the school in academia, the performing arts, sport and leadership. Performing arts groups will open the assembly and K-6 students will join together in song.

From each class, students are selected to receive awards in the areas of Academic Excellence, Improvement, Conscientious Endeavour and Citizenship. Special awards will also be presented.

Parents of students receiving awards will be notified by phone.

We ask that all students come to school by 9am and catch buses organised by the school from Greenwich Public School to Hunters Hill High School. We ask that students do not travel with their parents to Presentation Day as seating space for parents and students is at a premium and teachers need students in class groups to organise efficient seating arrangements.

Students will return to school at the conclusion of Presentation Day and will then complete a normal school day. Students will be supervised by classroom teachers on both journeys.

Hunters Hill High School address is Reiby Road, Hunters Hill. It is expected that Presentation Day should be concluded by 12 noon.

Please fill out the permission slip below and return to the School Office or class teacher.

Ms Megan Lockery
Principal

Permission to Attend K- 6 Presentation Day 2015

I give permission for my child _____ in class _____ to attend Presentation Day at Hunters Hill High School on Tuesday 8 December. I understand travel to and from Hunters Hill High School will be by bus.

Signed: _____ Date: _____
(Parent/Carer)

Greenwich Public School W www.greenwich-p.schools.nsw.edu.au

Greenwich Road Campus 72a Greenwich Road Greenwich NSW 2065 T 9436 3731 F 9906 4120 E greenwich2-p.school@det.nsw.edu.au

Kingslangley Road Campus 32 Kingslangley Road Greenwich NSW 2065 T 9436 3217 F 9906 6437 E greenwich-p.school@det.nsw.edu.au

GREENWICH PUBLIC SCHOOL

K-6

Presentation Assembly

Tuesday
8 December 2015
10.00am – 12 noon

Venue

Hunters Hill High School

Phil Daniels Pavilion
 Reiby Road, Hunters Hill 2110

You are cordially invited to attend our special day to celebrate the achievements of our students in 2015

A morning tea to say thank you to all who have helped us in 2015

Dear School Volunteer Helper

The Principal and staff of Greenwich Public School would like to invite you to a special morning tea on Thursday 3 December.

This is an opportunity for the staff to thank the Scripture and Ethics teachers, the many parents, other family members and friends who have helped with our school programs throughout 2015. The assistance we receive from so many is invaluable.

The morning tea will be held in the School Hall at the Kingslangley Road campus between 11.00am and 12.00pm on Thursday 3 December.

We look forward to seeing you and personally thanking you for all your help.

RSVP email: greenwich-p.school@det.nsw.edu.au or the Primary Office on 9436 3217 before Monday 30 November.

We invite you to attend our

Performing Arts Concert

Monday 30 November

Kingslangley Road School Hall from 6:30 – 8:00pm

Greenwich Public School will showcase our wonderful
performing arts students from the

K-1 Choir
Junior Choir
String Ensemble
Guitar Groups
Years 2-6 Recorder Ensembles
Training and Performing Bands
Junior Dance Group

Do not miss this opportunity to hear the school's diverse music groups play and support our students and the school's music programs



Greenwich Public School does not endorse or approve any particular product or service advertised in this newsletter.

Greenwich
Carols by Candlelight

6pm - 8.30pm

Monday 7 December 2015
Leemon Reserve, Robert St, Greenwich

Sausage Sizzle/ BYO picnic from 6pm
carols commence 6.30pm.

Enquiries: 02 9966 0543









www.summerreadingclub.org.au

Summer Reading Club

Get lost in a good book this summer
Discover underwater worlds, alternate universes and more.
Join @ Lane Cove Library
1 Dec - 27 Jan



Proudly supported by



Want To Play Junior Rugby League?

<h3>Mini Footy</h3> <p>Focussed on involvement and encouraging learning through play without the pressure of sticking to the strict laws of the game</p> <p>Ages 4-8</p>	<h3>Mod League</h3> <p>When Mini Footy is not challenging enough and they are ready for a more structured game</p> <p>Ages 9-12</p>	<h3>Rugby League</h3> <p>The full game played to international rules in various age-appropriate grades</p> <p>Ages 13+</p>
---	--	---





Lane Cove
Lane Cove Tigers
Tantallon Oval
Epping Road, Lane Cove

A family-oriented club

Free Come and Try Clinic at Tantallon Oval
5pm on Monday 7th December

U9s & U12s Premiers, U10 Grand Finalists

Email: lanecovetigers@gmail.com
0422 001 311
www.facebook.com/lanecovetigers

PLAYNRL.COM